

HOW DO WE “MAINSTREAM” DISASTER RISK REDUCTION?

Dilanthi Amaratunga FRICS Professor of disaster risk reduction and management; head, Global Disaster Resilience Centre, University of Huddersfield, UK

In the past decade, more than a billion people have been affected by disasters totalling more than \$1tn.

Growing populations are being exposed to more man-made and natural hazards. Effective mitigation and preparedness in the form of pre-disaster planning can greatly reduce the hazards before they impact on a community.

The protective nature of built assets can reduce the risk posed by hazards. Collaborative Action towards Disaster Resilience Education (CADRE) will identify mechanisms to make disaster resilience part of the construction process.

At the Global Disaster Resilience Centre, we're trying to get governments, businesses, communities and individuals working together to create a society that is able to withstand unforeseen events.

One of our aims is to develop a doctoral programme that integrates academic and professional knowledge throughout the construction industry, to increase resilience to disasters.



RICSmodus



rics.org/modus

@RICSnews

ASK THE BIG QUESTIONS
DEC-JAN 2016-17

MODUS

顛
覆

顛

DISRUPTION

Infostructure | 22

Jobs for robots | 14

Off-site rules | 26

号

MODUS DEC/JAN 2016/17

RICS.ORG/MODUS

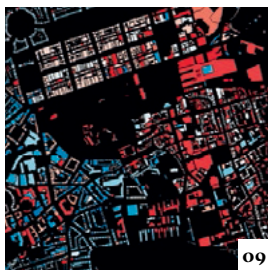
“My dad’s a portfolio landlord; he constantly bitched and moaned about letting agents. These guys don’t deserve to exist in 2016. It seems like nobody is happy with the system”

GEORGE SPENCER, RENTIFY
PROPTech, P30

Intelligence



06



09



11

06 DIFFERENCE OF OPINION

Should the UK government spend billions on renovating the Houses of Parliament? We hear two points of view

07-09 NEWS IN BRIEF

Industry news, advice and information for RICS professionals

08 THINKING: SIMON RUBINSOHN

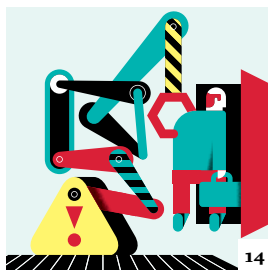
RICS' Chief Economist surveys the new political landscape after momentous votes on both sides of the Atlantic

11 PRESIDENT'S COLUMN

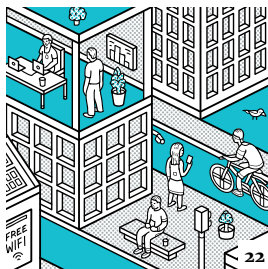
Amanda Clack FRICS on the disruptive impact artificial intelligence will have on the built environment and the profession



Features



14



22

14 ROBOTS ARE COMING ... LOOK BUSY

Rapid advances in AI mean our jobs are likely to change sooner than you think

22 DATA-DRIVEN CITIES

Technology is already transforming how we interact with our urban landscape

26 HERE'S ONE WE MADE EARLIER

How off-site construction can help alleviate the UK's housing shortage

30 GAZUMPED!

The proptech pioneers upending the traditional estate agency model

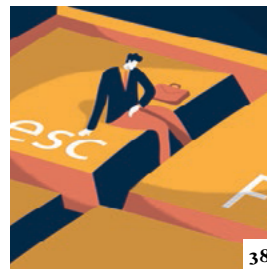
34 BANGALORE VERSION 2.0

Updates to India's original tech city are turning it into a global competitor

36 DHOW FACTOR

Was construction of Dubai's new opera house plain sailing?

Foundations



38



39



40

38-39 CAREERS

Knowing when to call it quits; MBM director Nicola Woodward MRICS

40 BUSINESS

Improving your office's energy efficiency

41 LEGAL 101

Changes to compulsory purchase orders

42 PROFESSIONAL DEVELOPMENT

What does being an expert witness entail?

43 SURVEYED

The latest products for professionals

58 MIND MAP

The Global Disaster Resilience Centre's Dilanthi Amaratunga FRICS on risk reduction

PLUS

44 Benefits

46 Obituaries + Conduct

45 Events

48 Recruitment

Views expressed in *Modus* are those of the named author and are not necessarily those of RICS or the publisher. The contents of this magazine are fully protected by copyright and may not be reproduced in any form without the prior permission of the publisher. All information correct at time of going to press. All rights reserved. The publisher cannot accept liability for errors or omissions. RICS does not accept responsibility for loss, injury or damage or costs that result from, or are connected in any way to, the use of products or services advertised. All editions of *Modus* are printed on paper sourced from sustainable, properly managed forests. This magazine can be recycled for use in newspapers and packaging. Please dispose of it at your local collection point. The polywrap is made from biodegradable material and can be recycled.